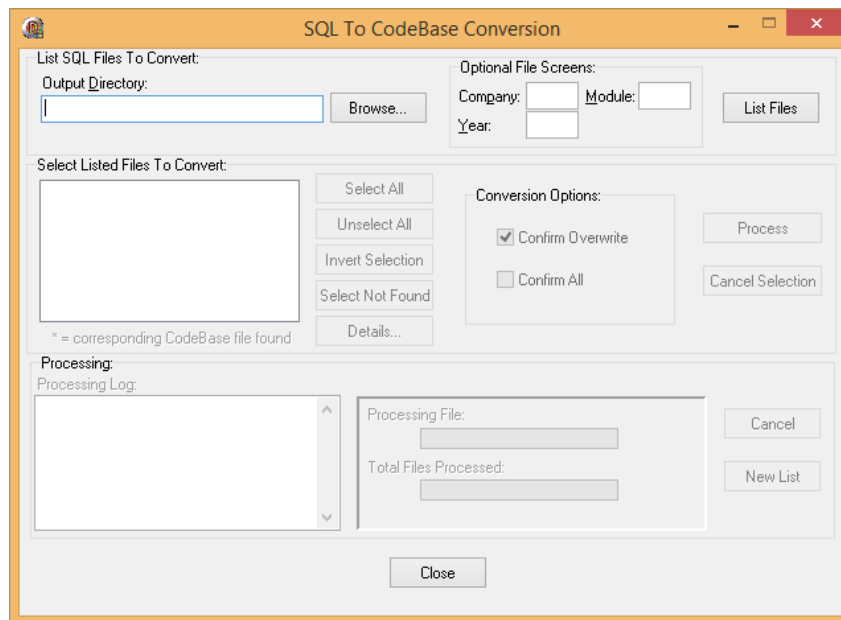


Data Pro Accounting Software and **F9**, an **INFOR** company, entered into a joint distribution agreement in March of 2015. **Version 5.0** is latest version of the product available for the popular **Financial Reporting** tool that works on top of Microsoft's Excel product. This is a major release that also includes support of **64 Bit versions of Windows, Windows 8 and Excel 2013**. The Data Pro database that is supported is the default **"FoxPro"** file system which is driven by the **"Codebase"** engine within Data Pro.

However, users of the Data Pro **"SQL"** software products can also easily export their **Infinity POWER General Ledger SQL** tables using the **"CBSQLCvt.exe"** utility that allows all data files to be converted either **"to or from"** an **SQL** database format.



This utility is included at **"no additional charge"** with all installations of the **Infinity POWER** products. Since **F9** only reports on **General Ledger FoxPro** data files, converting **SQL** database information to **FoxPro** for a single or multiple companies and fiscal years can be done quickly and can be done as frequently as desired (*typically once a month or period has been closed*).

F9 (Version 5.x) System Requirements

Operating Systems Supported

- Windows 8 and 8.1 (32 and 64 bit) - F9 V5 only is supported
- Windows 7 (32 and 64 bit)
- Windows Server 2012 and 2012 R2 (is 64 bit only)
- Windows Server 2008 (32 and 64 bit) and 2008 R2 (64 bit)
- Windows Server 2003 and 2003 R2 (32 and 64 bit)
- Windows Vista (32 and 64 bit)
- Windows XP (32 bit) (will be unsupported soon)
- Windows RT is not supported
- Windows 95/98/ME and Windows 2000 are no longer supported
- F9 Professional LDI Editor supported on Windows XP

Microsoft Office Excel Versions Supported

- Office 365 + Office ProPlus or Professional Plus 2013 **with Excel installed on-premise** (full installation) - F9 V5
- Excel 2013 (64 bit) (Desktop Application) - F9 V5
- Excel 2013 (32 bit) (Desktop Application) - F9 V5
- Excel 2010 (64 bit) - F9 V5
- Excel 2010 (32 bit) - F9 V5, V4.5, V4.2
- Excel 2007 - F9 V5, V4.5, V4.2, V4.0
- Excel 2003 - F9 V4.5, V4.2, V4.0

[How to find out if your Excel 2010 or 2013 is 32 or 64 bit](#)

F9 V5 and F9 Viewer require .NET Programmability support in Excel. **Click-to-Run installs of Office are not supported. Only Office versions with a "full installation option" are supported.**

[How to find out if your Excel is Click-to-Run](#)

Microsoft .NET Framework Requirements

- **F9 Version 5** - .NET Framework 3.5 is required. On some Windows operating systems, .NET Framework must be enabled as a feature within the Operating System.

.

Remote Desktop Services/Terminal Server and Citrix

- Windows Server 2012 (64 bit) and 2012 R2 (64 bit)
- Windows Server 2008 (32 and 64 bit) and 2008 R2 (64 bit)
- Windows Server 2003 and 2003 R2 (32 and 64 bit)

F9 Scheduler Requirements

- F9 Version 5
- Excel 2007 SP2 or higher
- Windows PowerShell Version 2
- For more information please refer to the Product specific Help file